

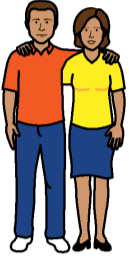
Speak Up and be Safe from Abuse

Supporting people with communication difficulties to be safe from abuse.

Abuse Prevention Plan

People and Relationships

Actions required to support customers in the house to build trusting relationships include:



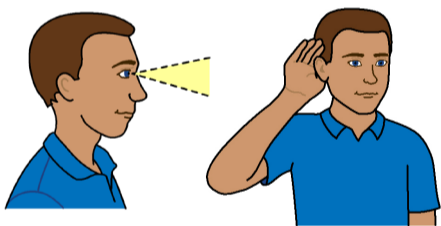
Communication

A summary of communication supports to assist customers include:



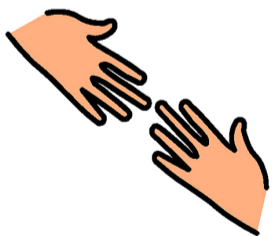
Watch, listen and respond

Actions required to listen and respond to each customer's communication:



Human rights and support

Actions to ensure that customers human rights are upheld include:



Learn

Strategies to support customers to learn about human rights, sexual health and abuse/neglect include:



Speak Up and be Safe from Abuse

Supporting people with communication difficulties to be safe from abuse.

We all have the right to be safe

People and Relationships

We need different people around us, who we care about and who care about us



- Peers
- Staff
- Family
- Friends
- Colleagues
- Volunteers
- Community members
- Advocates

Communication

We need the words to be able to talk about abuse

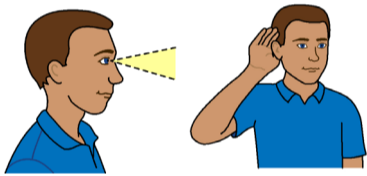


- Ask me how I am and believe everyone has a story to tell
- Use key word signs or picture supports
- Make communication aids available and ready to use
- Observe any non-verbal behaviours and report any changes

Find the communication aids _____ (eg. office, filing cabinet)

Watch, listen and respond

We all need someone to listen and do something about it



- Make time to listen to me. You may need to allow more time if I use different ways to communicate.
- You do not need to decide what is true or false.

Your responsibility is to follow policy and/or report a crime to the police.

Human rights and support

We need the best support to feel safe



- Create an environment that encourages people to speak up and report abuse
- Make a plan with me about how to provide support, especially when the support involves personal care.
- Check with me if you are providing support the right way
- Any restrictions, such as behaviour supports, medication and physical restraints must be recorded in a behaviour support plan.
- Follow any support or care plans. Review regularly.
- Refer me to appropriate support services, such as counselling.

Learn



- Support me to understand my human rights
- Support me to understand what abuse and neglect is
- Support me to learn about sexual health
- Find education, support services and Easy English materials.

Name of house:

Plans for review: